

## GKF28 Folding Door System



Door Width	Max. 450 mm/Door
Door Height	Max. 2400 mm
Door Thickness	15 - 20 mm
Door Weight	Max. 7 kg/Door※ <sup>1</sup>
Coverage	19 mm
Door Type	□ 2 Folding Door (Overlay)

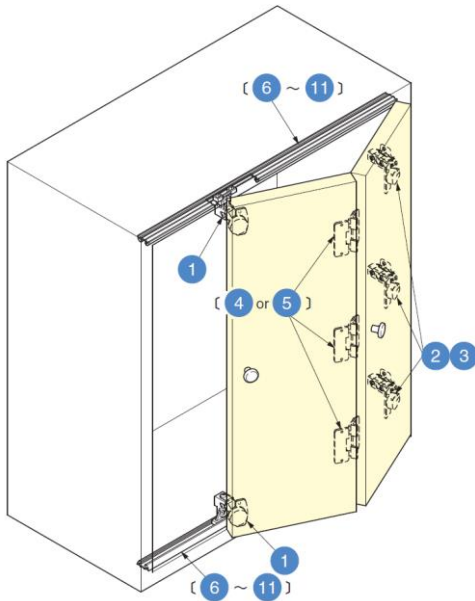
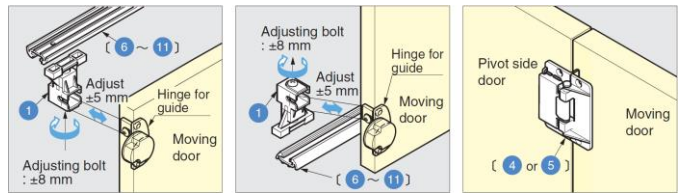
※<sup>1</sup> Door weight has priority over door size

### Overlay folding door with concealed hinges

#### Features

- Easy installation of surface mount rails
- Adjustable with sliding guide parts

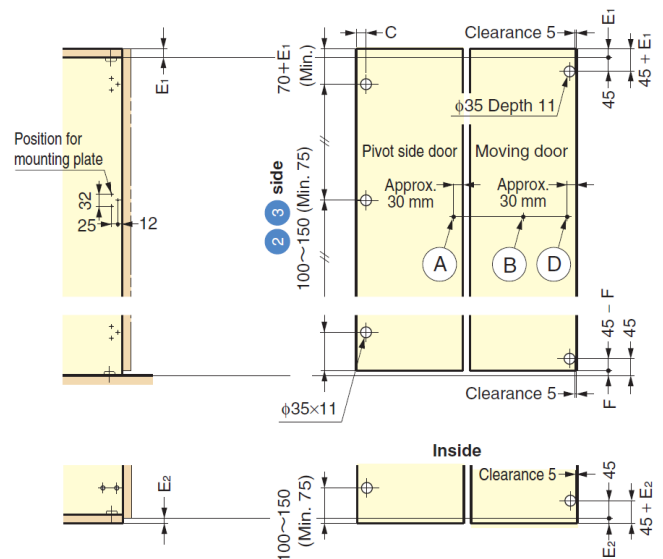
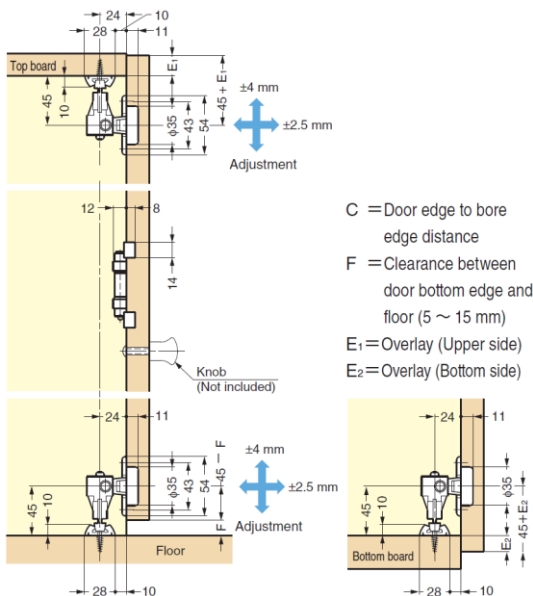
#### Installation



Door Height	Concealed Hinge ② ③	Centre Hinge ④ ⑤
900 mm	2 pcs	2 pcs
1600 mm	3 pcs	2 pcs
2000 mm	4 pcs	3 pcs
2400 mm	5 pcs	4 pcs

Coverage at Hinge Door Side	Door Edge to Bore Edge Distance
19 mm	5 mm
18 mm	4 (5) mm
17 mm	3 (4) mm

( ) shows hinge adjustable range



## Door Width

Application	Pivot Side Door at 90° Open	Pivot Side Door at 95° Open	Same Door Width Pivot Side Door at 87° Open
<p>2 folding doors</p> <p>Approx. 63</p> <p>W : Width of inside cabinet                      W<sub>1</sub> : Width of Door 1 and Door 4                      W<sub>2</sub> : Width of Door 2 and Door 3                      W<sub>3</sub> : Width of Door 3                      E : Coverage                      θ° : Opening angle at pivot side door</p>	$W_1 = \frac{W+2E-4.8}{2}$ $W_2 = W_1 + 3.2$	$W_1 = \frac{W+2E-7.8}{2}$ $W_2 = W_1 + 6.2$	$W_1 = \frac{W+2E-1.6}{2}$ $W_2 = W_1$ <p>Opening Angle = 87°</p>
<p>2 folding doors + 1 swing door</p>	<ul style="list-style-type: none"> <li>● W<sub>3</sub> = W<sub>1</sub>  <math display="block">W_1 = W_3 = \frac{W+2E-6.4}{3}</math> <math display="block">W_2 = W_1 + 3.2</math></li> <li>● W<sub>3</sub> = W<sub>2</sub>  <math display="block">W_1 = \frac{W+2E-9.6}{3}</math> <math display="block">W_2 = W_3 = W_1 + 3.2</math></li> </ul>	<ul style="list-style-type: none"> <li>● W<sub>3</sub> = W<sub>1</sub>  <math display="block">W_1 = W_3 = \frac{W+2E-9.4}{3}</math> <math display="block">W_2 = W_1 + 6.2</math></li> <li>● W<sub>3</sub> = W<sub>2</sub>  <math display="block">W_1 = \frac{W+2E-15.6}{3}</math> <math display="block">W_2 = W_3 = W_1 + 6.2</math></li> </ul>	$W_1 = \frac{W+2E-3.2}{3}$ $W_1 = W_2 = W_3$ <p>Opening Angle = 87°</p>
<p>2 folding doors + 2 folding doors</p>	$W_1 = \frac{W+2E-11.2}{4}$ $W_2 = W_1 + 3.2$	$W_1 = \frac{W+2E-17.2}{4}$ $W_2 = W_1 + 6.2$	$W_1 = \frac{W+2E-4.8}{4}$ $W_1 = W_2$ <p>Opening Angle = 87°</p>

## Slide Guide Concealed Hinge Mounting Plate Centre Hinge Rail

### Necessary Parts

1 2 pcs are necessary for a pair of doors. Please order necessary qty of 2, 3 and 4 / 5 based on door height (refer to chart on P.644). Please order suitable rail 6 - 11 for the application.

No.	Item Code	Part Name	Dimensions	Description	No.	Item Code	Part Name	Dimensions	Description																																
1	GFD28-SG	Sliding Guide		<ul style="list-style-type: none"> <li>● Material Zinc Alloy (ZDC) Polyacetal (POM)</li> <li>● Finish Body : Nickel</li> </ul>	4	GCH-75NI	Centre Hinge		<ul style="list-style-type: none"> <li>● Material Zinc Alloy (ZDC) Polyamide (PA) Polyacetal (POM) Hinge Axis : Steel</li> <li>● Finish Body : Nickel (NI) Bronze (GB)</li> </ul>																																
					5	GCH-75GB	Bronze			2	G230-26/19T	Concealed Hinge		<ul style="list-style-type: none"> <li>● Material Steel</li> <li>● Finish Nickel</li> </ul>	6	GFD28-910-SIL	Silver 910 mm		<ul style="list-style-type: none"> <li>● Material Aluminium Alloy</li> <li>● Finish Anodized/Silver</li> </ul>	7	GFD28-1220-SIL	Silver 1220 mm	3	G230-P4W-32T	Mounting Plate		<ul style="list-style-type: none"> <li>● Material Steel</li> <li>● Finish Nickel</li> </ul>	8	GFD28-1820-SIL	Silver 1820 mm	<p>Pitch End : 25 mm</p>	<ul style="list-style-type: none"> <li>● Material Aluminium Alloy</li> <li>● Finish Anodized/Bronze</li> </ul>	9	GFD28-910-GB	Bronze 910 mm	10	GFD28-1220-GB	Bronze 1220 mm			
2	G230-26/19T	Concealed Hinge		<ul style="list-style-type: none"> <li>● Material Steel</li> <li>● Finish Nickel</li> </ul>	6	GFD28-910-SIL	Silver 910 mm		<ul style="list-style-type: none"> <li>● Material Aluminium Alloy</li> <li>● Finish Anodized/Silver</li> </ul>																																
					7	GFD28-1220-SIL	Silver 1220 mm			3	G230-P4W-32T	Mounting Plate		<ul style="list-style-type: none"> <li>● Material Steel</li> <li>● Finish Nickel</li> </ul>	8	GFD28-1820-SIL	Silver 1820 mm	<p>Pitch End : 25 mm</p>	<ul style="list-style-type: none"> <li>● Material Aluminium Alloy</li> <li>● Finish Anodized/Bronze</li> </ul>	9	GFD28-910-GB	Bronze 910 mm						10	GFD28-1220-GB	Bronze 1220 mm								11	GFD28-1820-GB	Bronze 1820 mm	
3	G230-P4W-32T	Mounting Plate		<ul style="list-style-type: none"> <li>● Material Steel</li> <li>● Finish Nickel</li> </ul>	8	GFD28-1820-SIL	Silver 1820 mm	<p>Pitch End : 25 mm</p>	<ul style="list-style-type: none"> <li>● Material Aluminium Alloy</li> <li>● Finish Anodized/Bronze</li> </ul>																																
					9	GFD28-910-GB	Bronze 910 mm																																		
					10	GFD28-1220-GB	Bronze 1220 mm																																		
					11	GFD28-1820-GB	Bronze 1820 mm																																		